

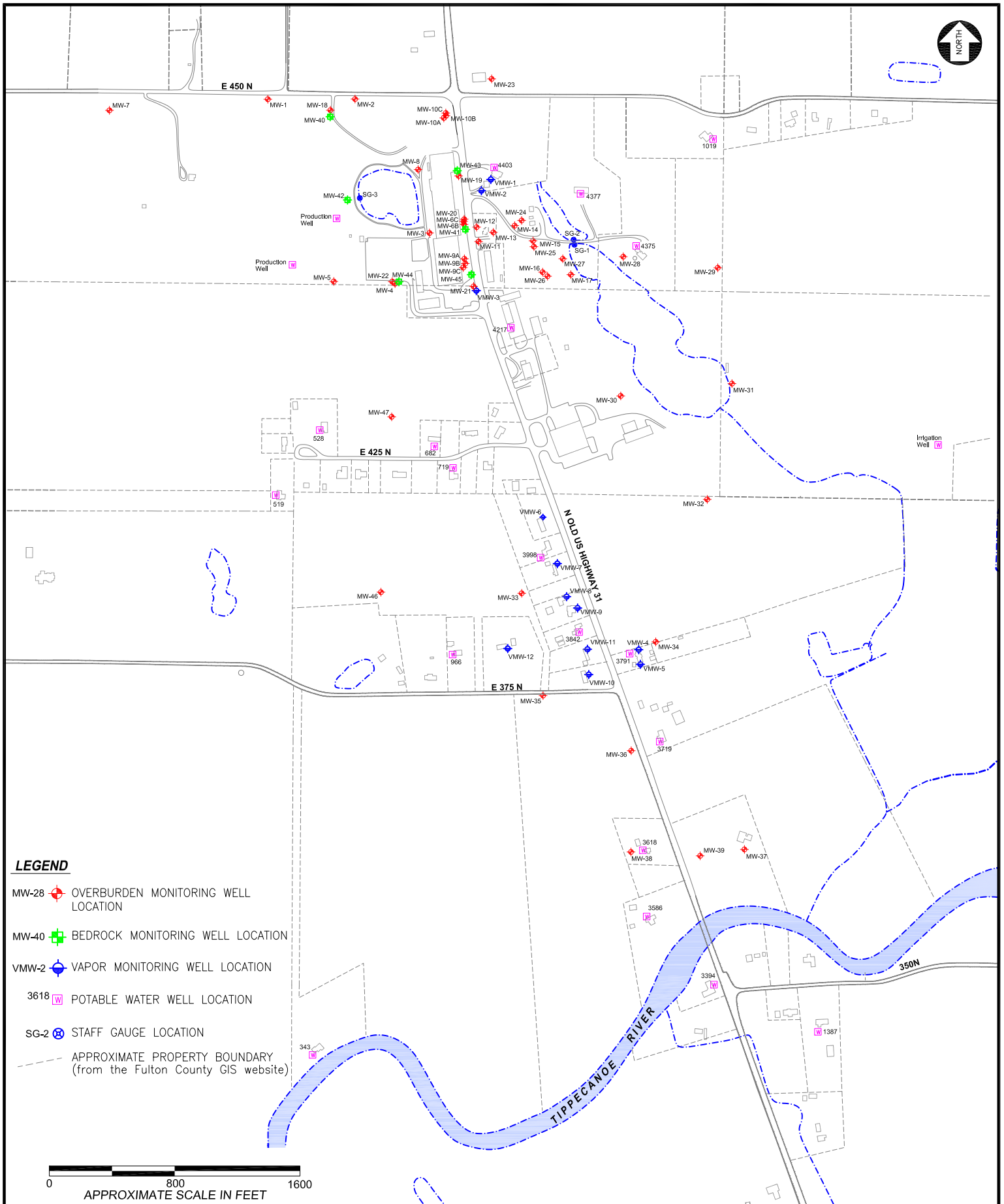
DRAWN BY P:\Textron\TFS\ FILE NO.
 RLB Drawings\TFS Topo.dwg
 APPROVED BY DATE 07/23/2009
 SOURCE USGS topographic quadrangles of Argos, IN, 1994 and Rochester, IN, 1992.
 PROJECT NO. SCALE
 3359 09 2469 SEE ABOVE

FORMER TORX FACILITY
4366 NORTH OLD US HIGHWAY 31
ROCHESTER, INDIANA


 521 Byers Road Suite 204
 Miamisburg, Ohio 45342
 (937) 859-3600 FAX (937) 859-7951

SITE
LOCATION
MAP

DRAWING NO.
1
 SHEET 1 of 1



LEGEND

- MW-28 OVERBURDEN MONITORING WELL LOCATION
- MW-40 BEDROCK MONITORING WELL LOCATION
- VMW-2 VAPOR MONITORING WELL LOCATION
- 3618 POTABLE WATER WELL LOCATION
- SG-2 STAFF GAUGE LOCATION
- APPROXIMATE PROPERTY BOUNDARY (from the Fulton County GIS website)

0 800 1600
APPROXIMATE SCALE IN FEET

DRAWN BY	P:\Textron\TFS\	FILE NO.
RLB	Drawings\TFS Surveyed Wells.dwg	
APPROVED BY		DATE
		07/28/2009
SOURCE Wells surveyed by Territorial Engineering, 2009; Fulton County, IN GIS, 2005.		
PROJECT NO.	SCALE	
3359 09 2469	SEE ABOVE	

FORMER TORX FACILITY
4366 NORTH OLD US HIGHWAY 31
ROCHESTER, INDIANA

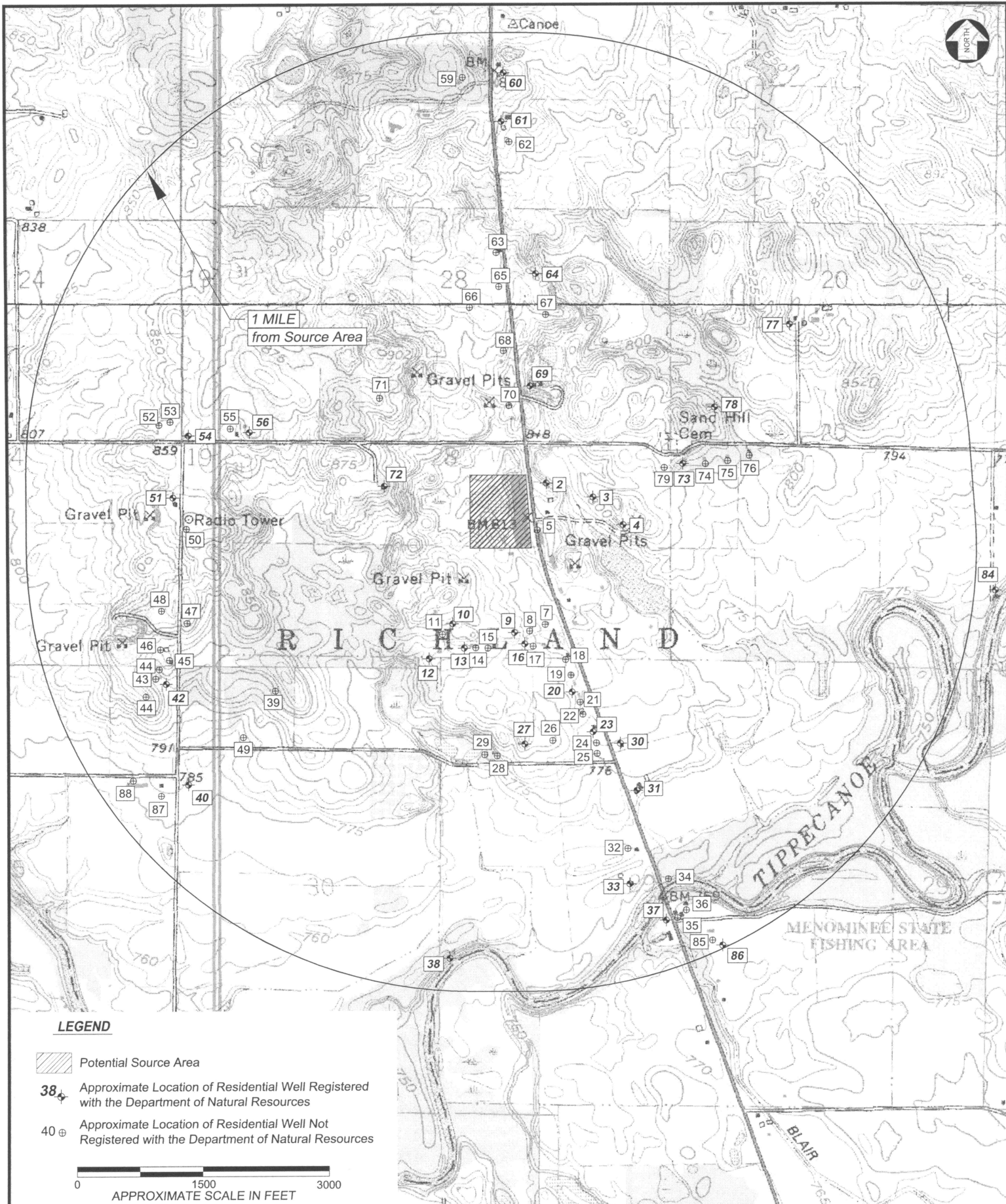
MACTEC
 521 Byers Road Suite 204
 Miamisburg, Ohio 45342
 (937) 859-3600 FAX (937) 859-7951

SITE PLAN


DRAWING NO.

2

SHEET 1 of 1



LEGEND

-  Potential Source Area
- 38** * Approximate Location of Residential Well Registered with the Department of Natural Resources
- 40** ⊕ Approximate Location of Residential Well Not Registered with the Department of Natural Resources



DRAWN BY P:\Textron\TFS\ RLB
 FILE NO. Drawings\TFS Topo Area.dwg
 APPROVED BY DATE 07/28/2009
 SOURCE USGS Topographic maps of Rochester, Argos, Pershing, and Rutland, Indiana
 PROJECT NO. 3359 09 2469
 SCALE SEE ABOVE

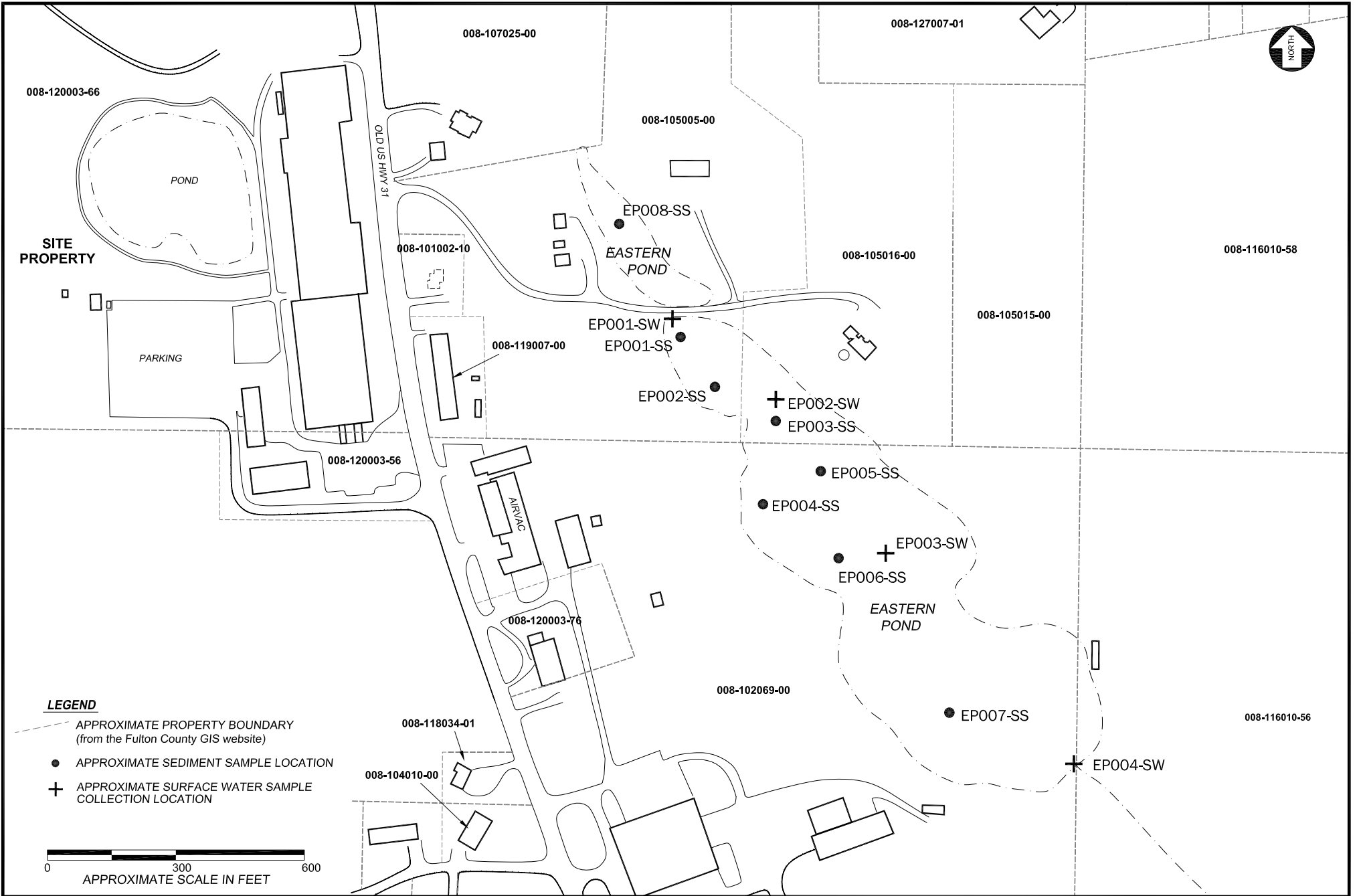
FORMER TORX FACILITY
4366 NORTH OLD US HIGHWAY 31
ROCHESTER, INDIANA

MACTEC
 521 Byers Road Suite 204
 Miamisburg, Ohio 45342
 (937) 859-3600 FAX (937) 859-7951

APPROXIMATE LOCATION OF RESIDENTIAL WELLS

DRAWING NO. **3**

SHEET 1 of 1



DRAWN BY	P:\Textron\TFS\	FILE NO.
RLB	Drawings\TFS Pond Area.dwg	
APPROVED BY		DATE
		07/28/2009
SOURCE	MACTEC Notes 06/28/05; Fulton County, IN GIS, 2005; Wilcox survey, 2008.	
PROJECT NO.	3359 09 2469	SCALE
		SEE ABOVE

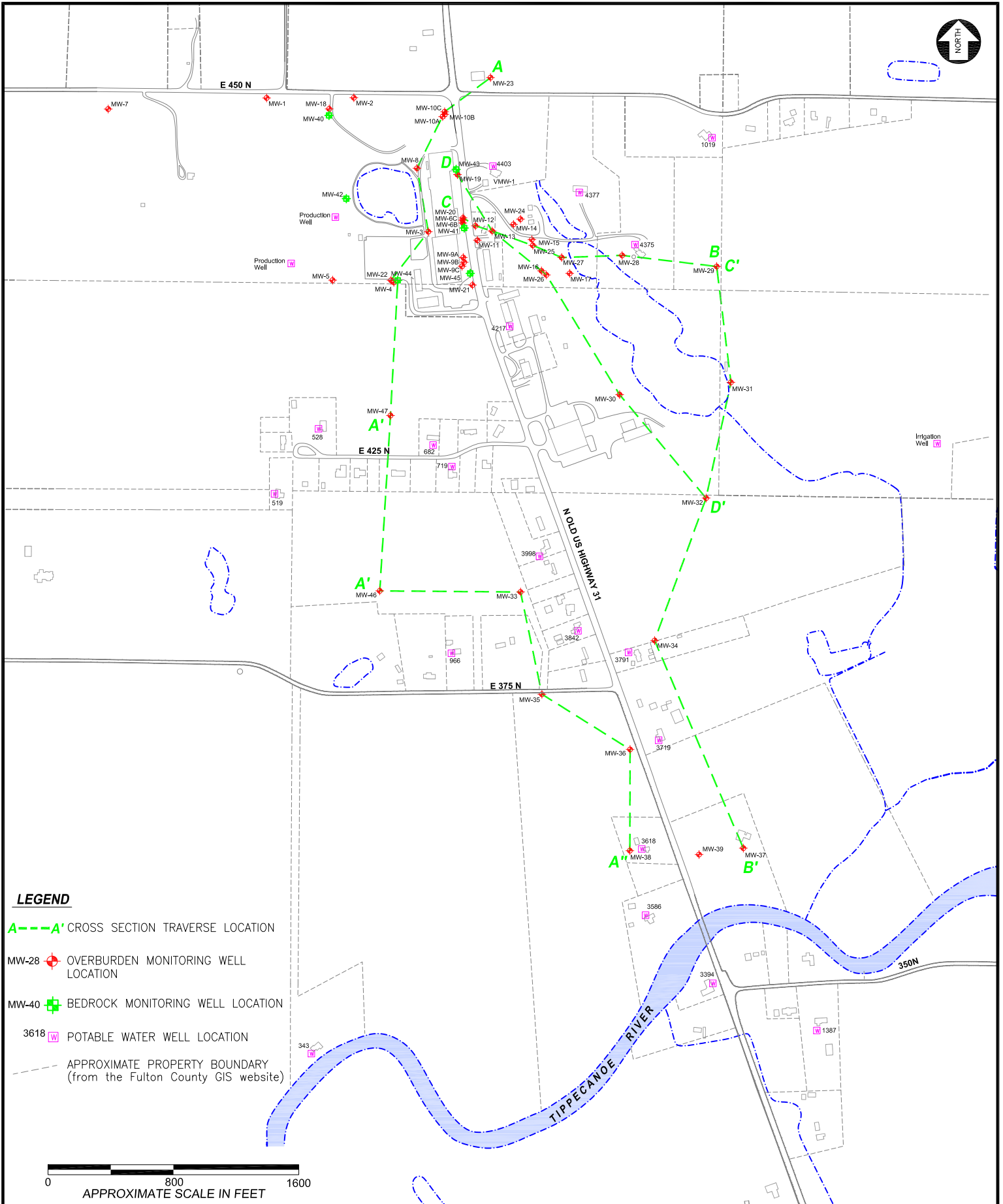
FORMER TORX FACILITY
4366 NORTH OLD US HIGHWAY 31
ROCHESTER, INDIANA



521 Byers Road Suite 204
 Miamisburg, Ohio 45342
 (937) 859-3600 FAX (937) 859-7951

APPROXIMATE
EASTERN POND
SAMPLING LOCATIONS

DRAWING NO.	4
SHEET	1 of 1



LEGEND

A---A' CROSS SECTION TRAVERSE LOCATION

MW-28  OVERBURDEN MONITORING WELL LOCATION

MW-40  BEDROCK MONITORING WELL LOCATION

3618  POTABLE WATER WELL LOCATION

--- APPROXIMATE PROPERTY BOUNDARY (from the Fulton County GIS website)

0 800 1600
APPROXIMATE SCALE IN FEET

DRAWN BY P:\Textron\TFS\ FILE NO.
RLB Drawings\TFS Surveyed Wells.dwg
APPROVED BY DATE
07/28/2009
SOURCE Wells surveyed by Territorial Engineering,
2009; Fulton County, IN GIS, 2005.
PROJECT NO. SCALE
3359 09 2469 SEE ABOVE

**FORMER TORX FACILITY
4366 NORTH OLD US HIGHWAY 31
ROCHESTER, INDIANA**

MACTEC
521 Byers Road Suite 204
Miamisburg, Ohio 45342
(937) 859-3600 FAX (937) 859-7951

**LOCATION OF GEOLOGIC
CROSS SECTIONS**

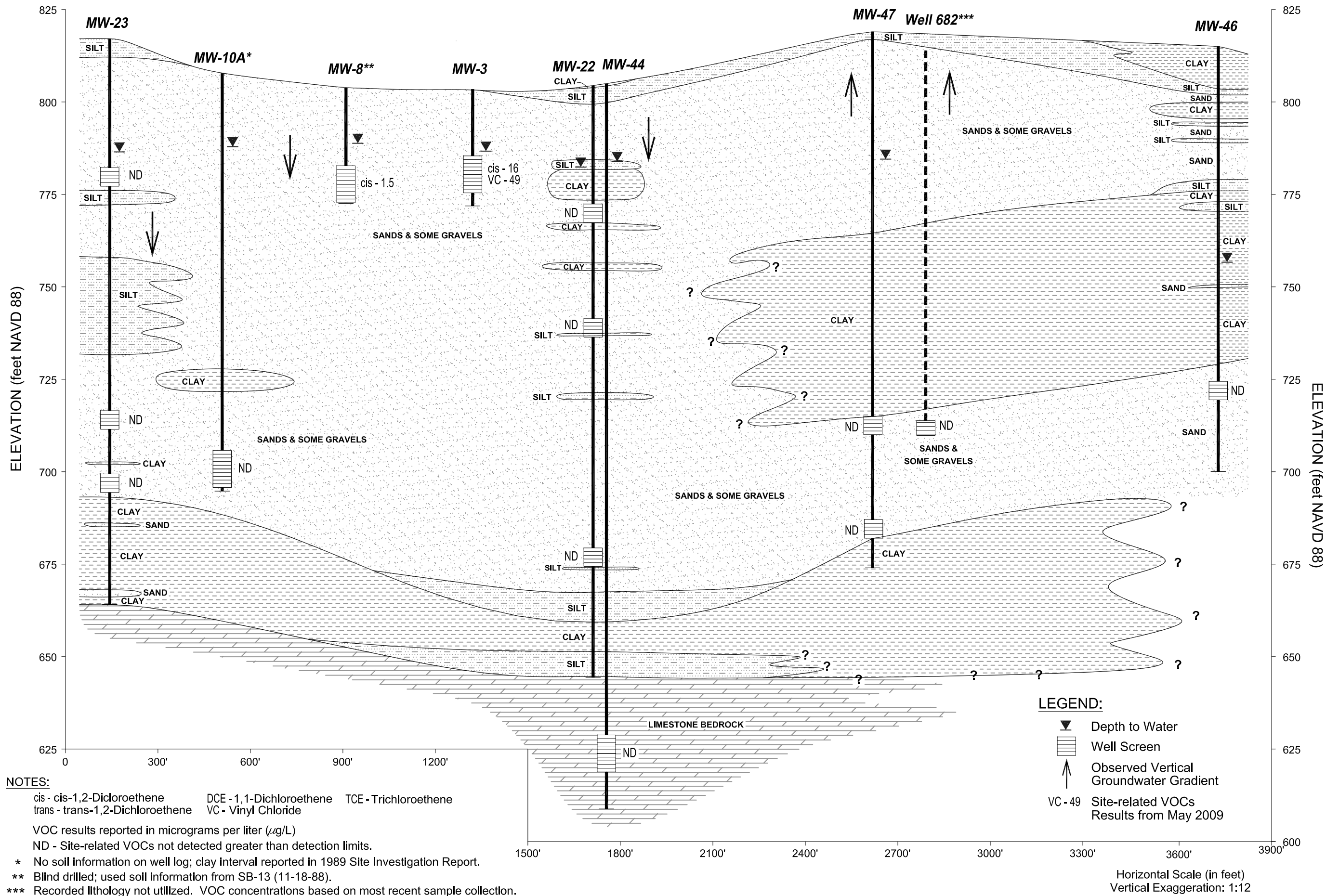
DRAWING NO.

5

SHEET 1 of 1

A (north)

A' (south)



NOTES:

cis - cis-1,2-Dichloroethene DCE - 1,1-Dichloroethene TCE - Trichloroethene
 trans - trans-1,2-Dichloroethene VC - Vinyl Chloride

VOC results reported in micrograms per liter (µg/L)

ND - Site-related VOCs not detected greater than detection limits.

* No soil information on well log; clay interval reported in 1989 Site Investigation Report.

** Blind drilled; used soil information from SB-13 (11-18-88).

*** Recorded lithology not utilized. VOC concentrations based on most recent sample collection. Well projected onto cross section.

NAVD 88 North American Vertical Datum 1988

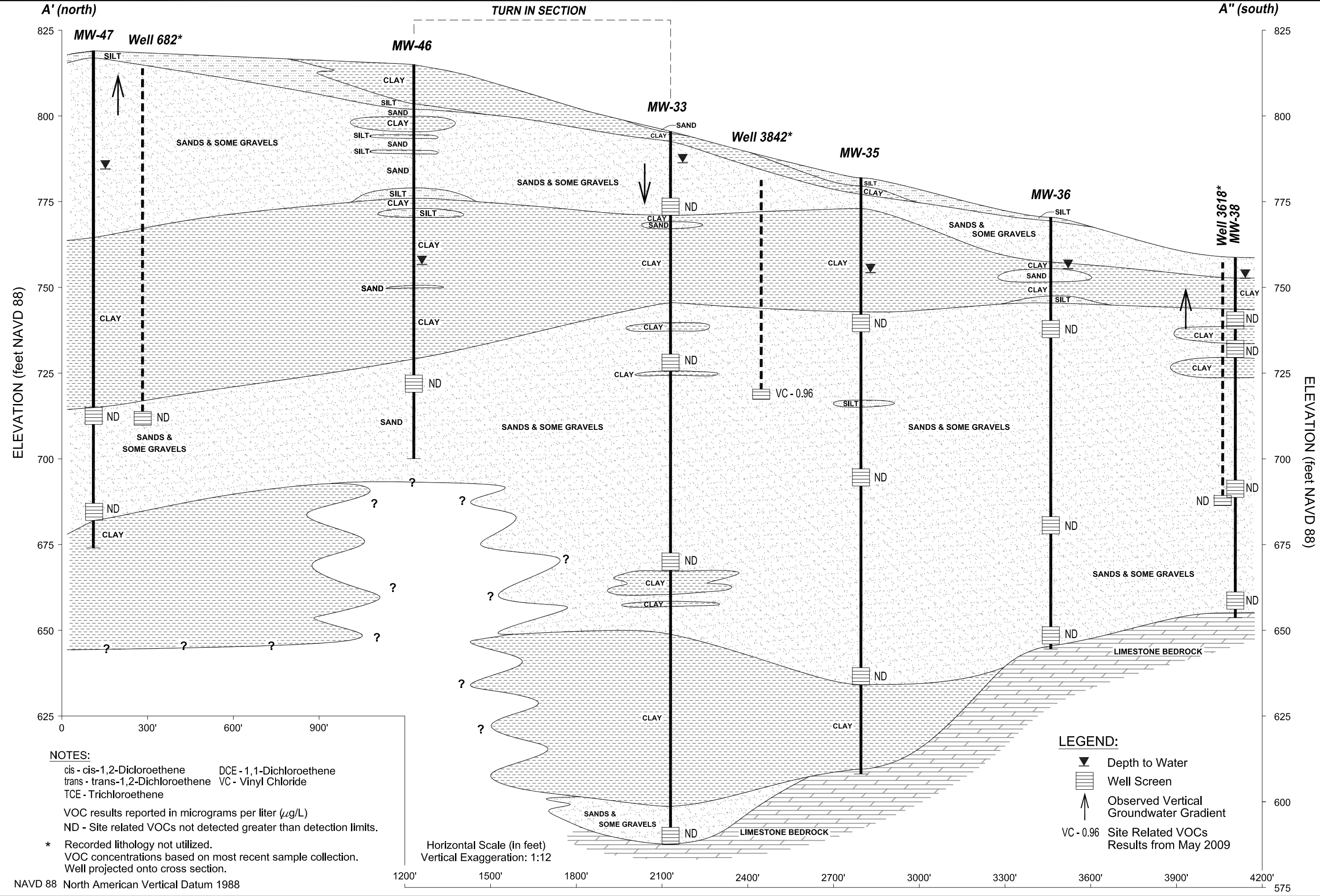
DRAWING NO. **6**
 SHEET 1 of 1

MACTEC
 521 Byers Road, Suite 204
 Miamisburg, Ohio 45342
 (937) 859-3600 FAX (937) 859-7951

FORMER TORX FACILITY
4366 NORTH OLD US HIGHWAY 31
ROCHESTER, INDIANA

FILE NO. P:\Texton\IFS\Drawings\IFS Sections 09.dwg
 DATE 08/04/2009
 SCALE SEE ABOVE

APPROVED BY
 SOURCE Survey provided by Territorial Engineering, LLC
 PROJECT NO. 3359 09 2469



NOTES:

cis - cis-1,2-Dichloroethene DCE - 1,1-Dichloroethene
trans - trans-1,2-Dichloroethene VC - Vinyl Chloride
TCE - Trichloroethene

VOC results reported in micrograms per liter ($\mu\text{g/L}$)
ND - Site related VOCs not detected greater than detection limits.

* Recorded lithology not utilized.
VOC concentrations based on most recent sample collection.
Well projected onto cross section.

LEGEND:

- Depth to Water
- Well Screen
- Observed Vertical Groundwater Gradient
- VC - 0.96 Site Related VOCs Results from May 2009

NAVD 88 North American Vertical Datum 1988

DRAWING NO. **7**
SHEET 1 of 1

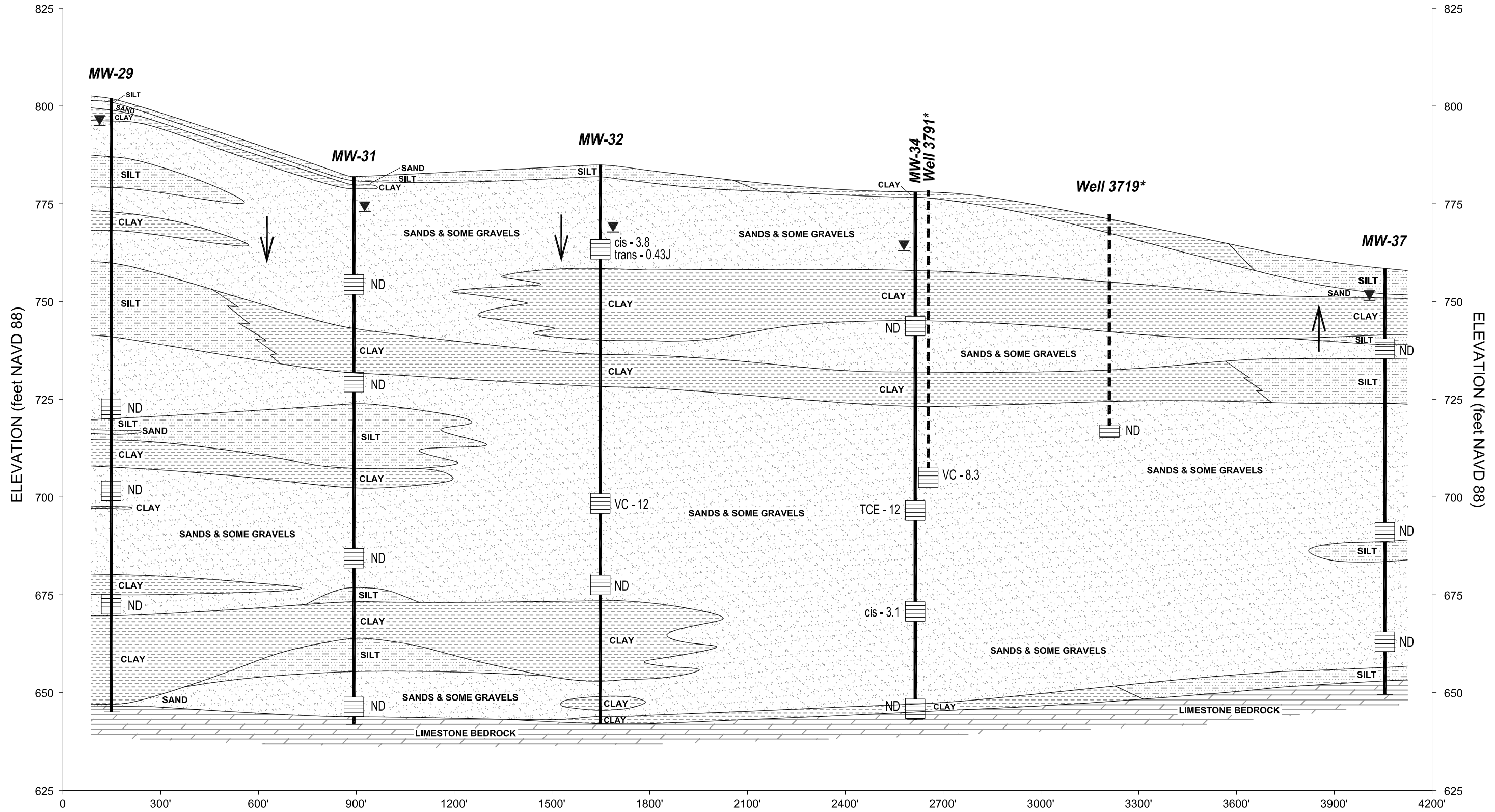
MACTEC
521 Byers Road, Suite 204
Miamisburg, Ohio 45342
(937) 859-3600 FAX (937) 859-7951

FORMER TORX FACILITY
4366 NORTH OLD US HIGHWAY 31
ROCHESTER, INDIANA

FILE NO. P:\Tecton\IFS\Drawings\IFS Sections 09.dwg
DATE 08/05/2009
SOURCE Survey provided by Territorial Engineering, LLC
PROJECT NO. 3359 09 2469
SCALE SEE ABOVE

B (north)

B' (south)



NOTES:

cis - cis-1,2-Dichloroethene DCE - 1,1-Dichloroethene TCE - Trichloroethene
 trans - trans-1,2-Dichloroethene VC - Vinyl Chloride

VOC results reported in micrograms per liter (µg/L)

ND - Site related VOCs not detected greater than detection limits.

J - Estimated value

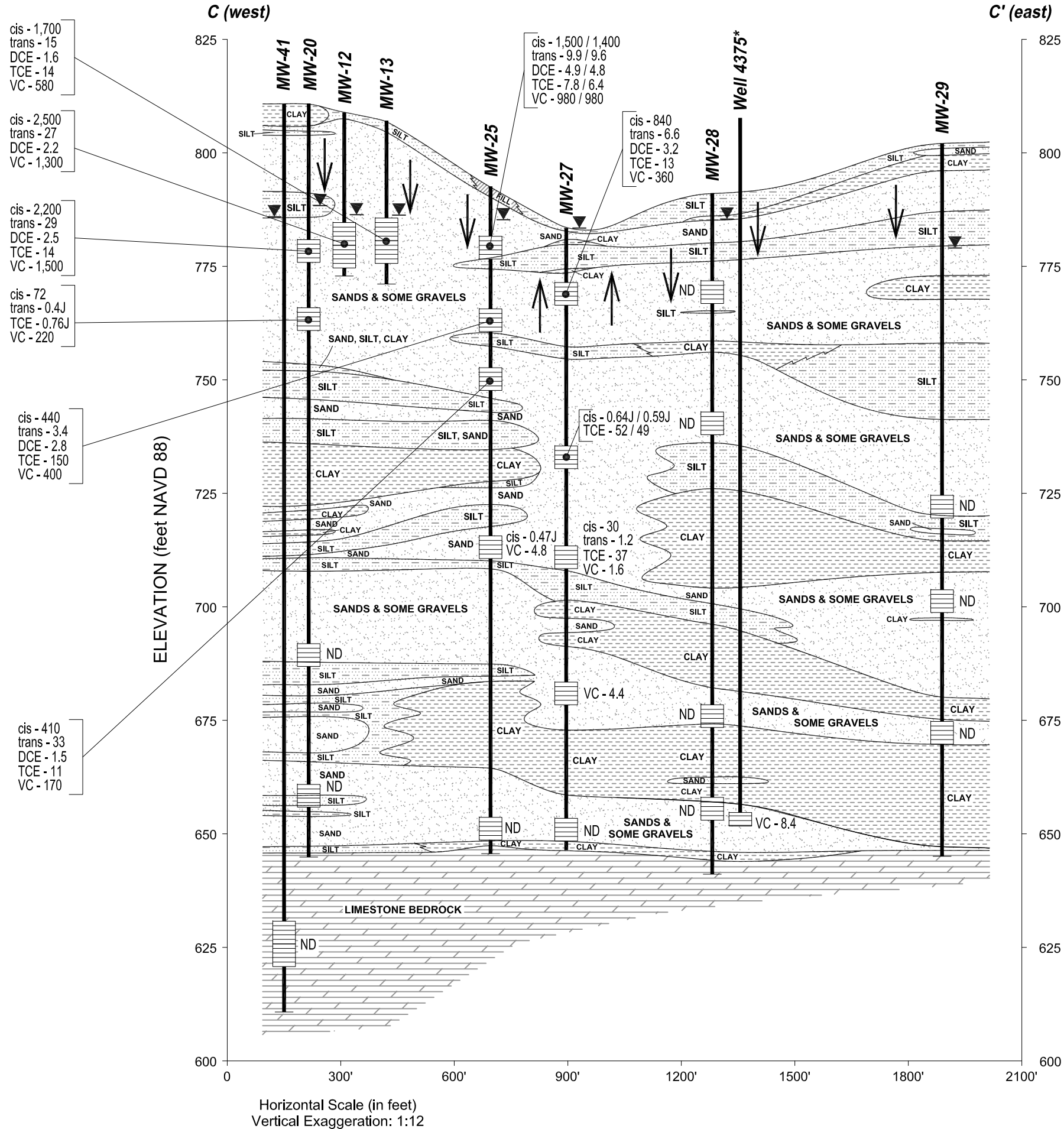
* Recorded lithology not utilized. VOC concentrations based on most recent sample collection.
 Well projected onto cross section.

Horizontal Scale (in feet)
 Vertical Exaggeration: 1:12

LEGEND:

- Depth to Water
- Well Screen
- Observed Vertical Groundwater Gradient
- cis - 3.1 Site-related VOCs Results from May 2009

NAVD 88 North American Vertical Datum 1988



LEGEND:

- ▼ Depth to Water
- ▤ Well Screen
- ↑ Observed Vertical Groundwater Gradient
- cis - 3.1 Site-related VOCs Results from May 2009

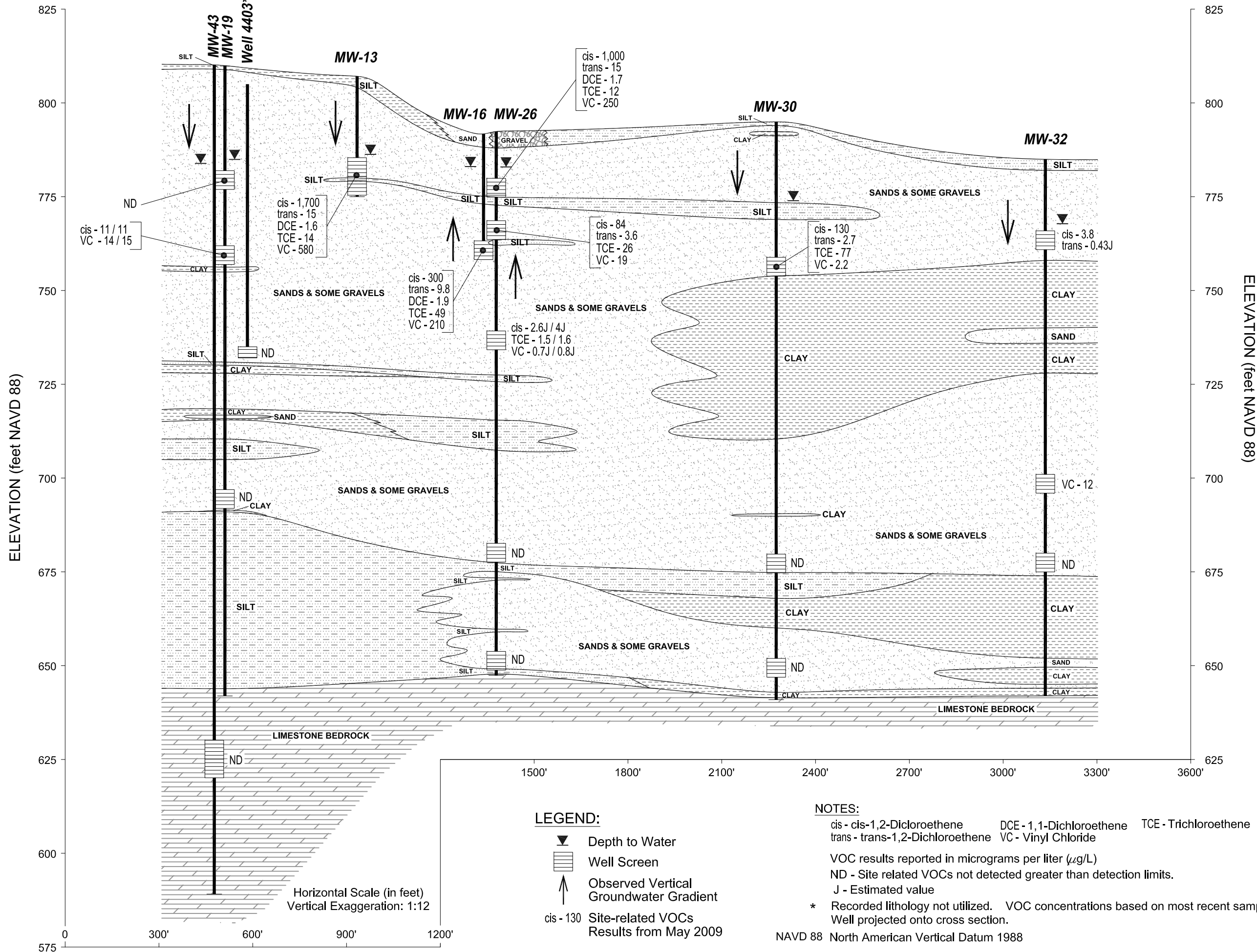
NOTES:

- cis - cis-1,2-Dichloroethene
- trans - trans-1,2-Dichloroethene
- TCE - Trichloroethene
- DCE - 1,1-Dichloroethene
- VC - Vinyl Chloride
- VOC results reported in micrograms per liter (µg/L)
- ND - Site related VOCs not detected greater than detection limits.
- J - Estimated value
- * Recorded lithology not utilized. VOC concentrations based on most recent sample collection. Well projected onto cross section.

NAVD 88 North American Vertical Datum 1988

D (northwest)

D' (southeast)



ELEVATION (feet NAVD 88)

ELEVATION (feet NAVD 88)

Horizontal Scale (in feet)
Vertical Exaggeration: 1:12

- LEGEND:**
- Depth to Water
 - Well Screen
 - Observed Vertical Groundwater Gradient
 - cis - 130 Site-related VOCs Results from May 2009

- NOTES:**
- cis - cis-1,2-Dichloroethene DCE - 1,1-Dichloroethene TCE - Trichloroethene
 - trans - trans-1,2-Dichloroethene VC - Vinyl Chloride
 - VOC results reported in micrograms per liter ($\mu\text{g/L}$)
 - ND - Site related VOCs not detected greater than detection limits.
 - J - Estimated value
 - * Recorded lithology not utilized. VOC concentrations based on most recent sample collection. Well projected onto cross section.

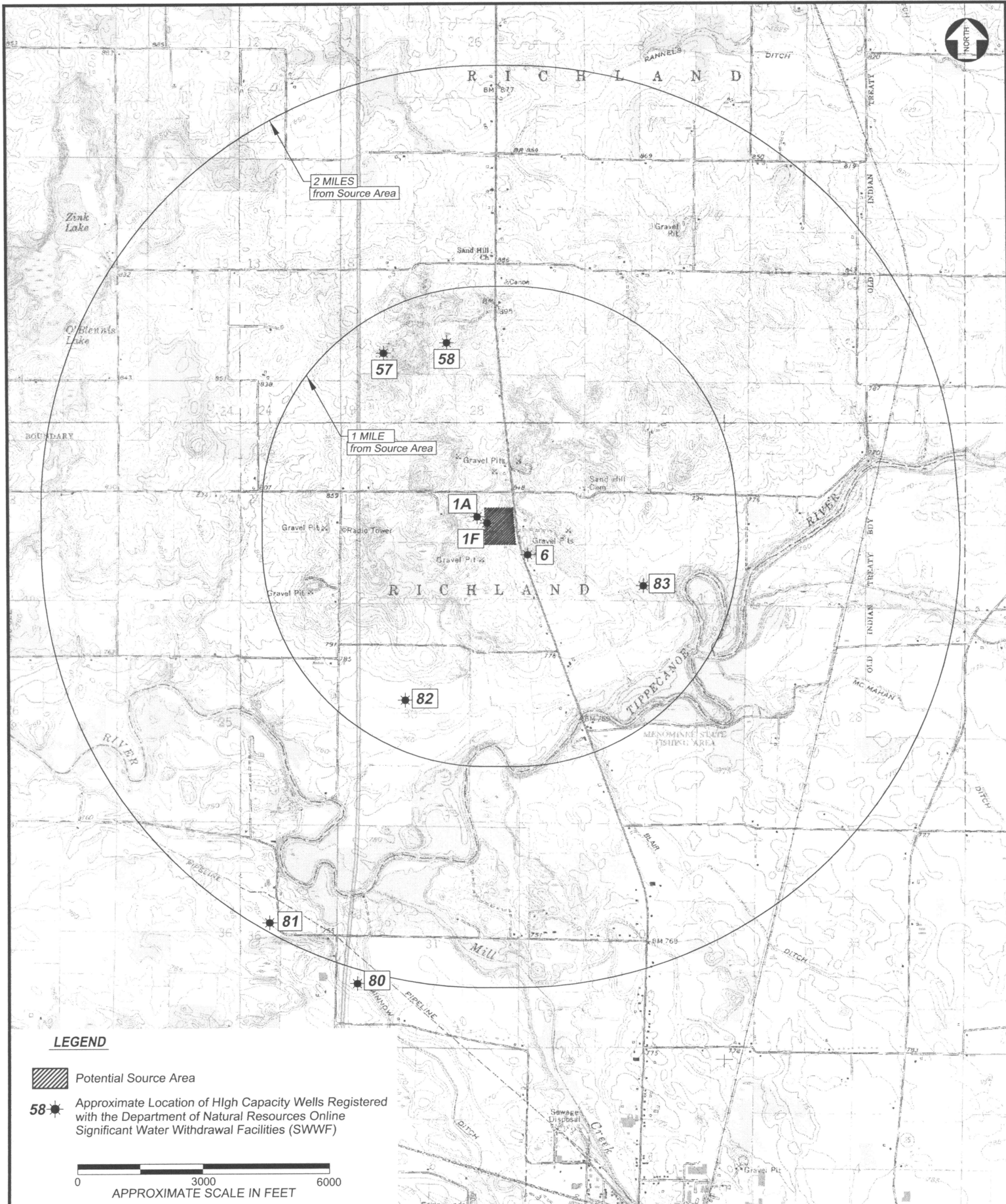
NAVD 88 North American Vertical Datum 1988

DRAWING NO. **10**
SHEET 1 of 1

MACTEC
521 Byers Road, Suite 204
Miamisburg, Ohio 45342
(937) 859-3600 FAX (937) 859-7951


FORMER TORX FACILITY
4366 NORTH OLD US HIGHWAY 31
ROCHESTER, INDIANA

FILE NO. P:\Textron\IFS\Drawings\IFS Sections 09.dwg
DATE 08/11/2009
SOURCE Survey provided by Territorial Engineering, LLC
PROJECT NO. 3359 09 2469
SCALE SEE ABOVE



LEGEND

 Potential Source Area

58  Approximate Location of High Capacity Wells Registered with the Department of Natural Resources Online Significant Water Withdrawal Facilities (SWWF)



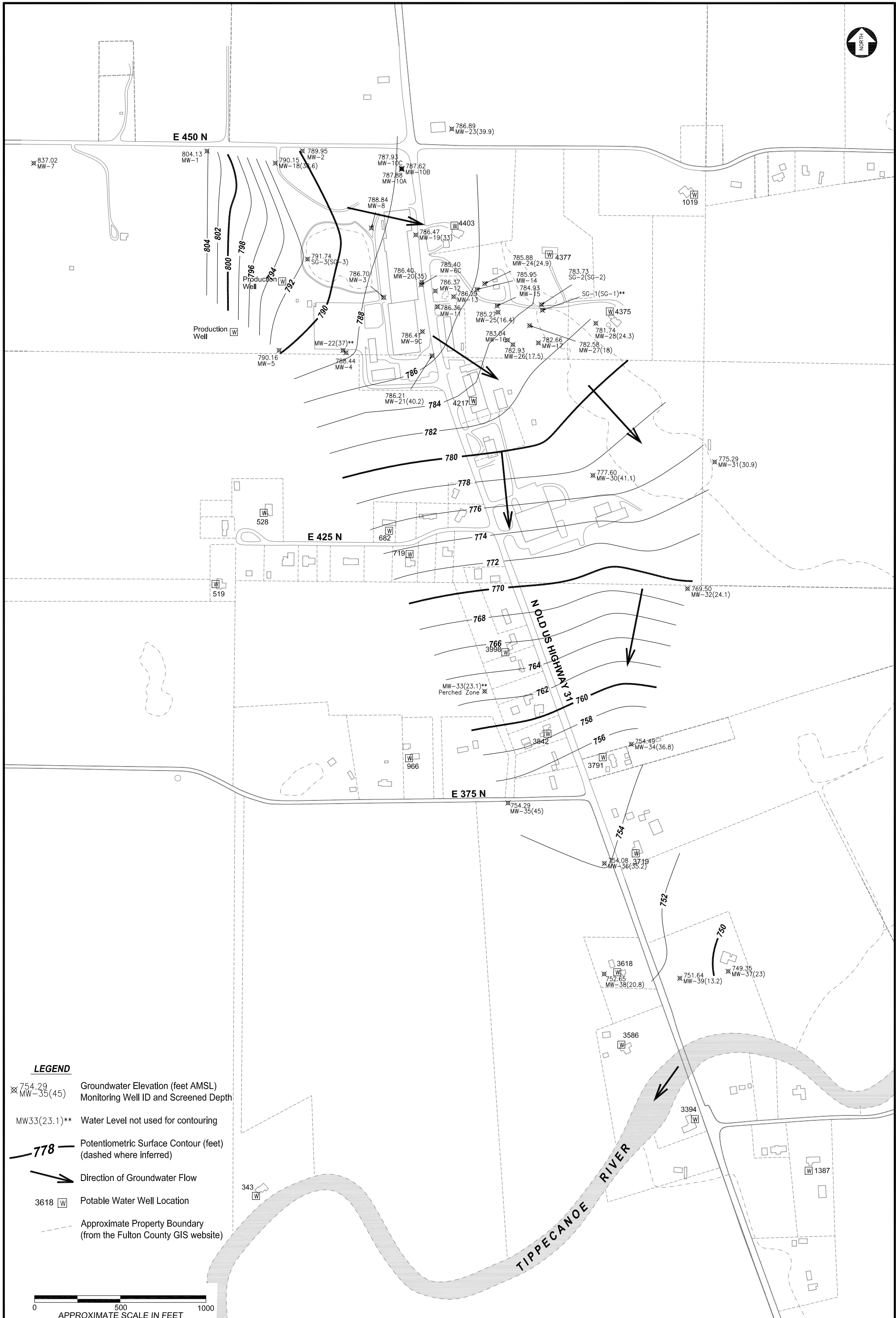
DRAWN BY P:\Textron\TFS\ FILE NO.
RLB Drawings\TFS Topo Area.dwg
APPROVED BY DATE
07/28/2009
SOURCE USGS Topographic maps of Rochester, Argos, Pershing, and Rutland, Indiana
PROJECT NO. SCALE
3359 09 2469 SEE ABOVE

FORMER TORX FACILITY
4366 NORTH OLD US HIGHWAY 31
ROCHESTER, INDIANA

 **MACTEC**
521 Byers Road Suite 204
Miamisburg, Ohio 45342
(937) 859-3600 FAX (937) 859-7951

APPROXIMATE LOCATION
OF SIGNIFICANT WATER
WITHDRAWAL FACILITIES

DRAWING NO. **11**
SHEET 1 of 1



LEGEND

- ⊗ 754.29 MW-35(45) Groundwater Elevation (feet AMSL)
- ⊗ MW-35(45) Monitoring Well ID and Screened Depth
- MW33(23.1)** Water Level not used for contouring
- 778 — Potentiometric Surface Contour (feet) (dashed where inferred)
- Direction of Groundwater Flow
- 3618 W Potable Water Well Location
- - - Approximate Property Boundary (from the Fulton County GIS website)



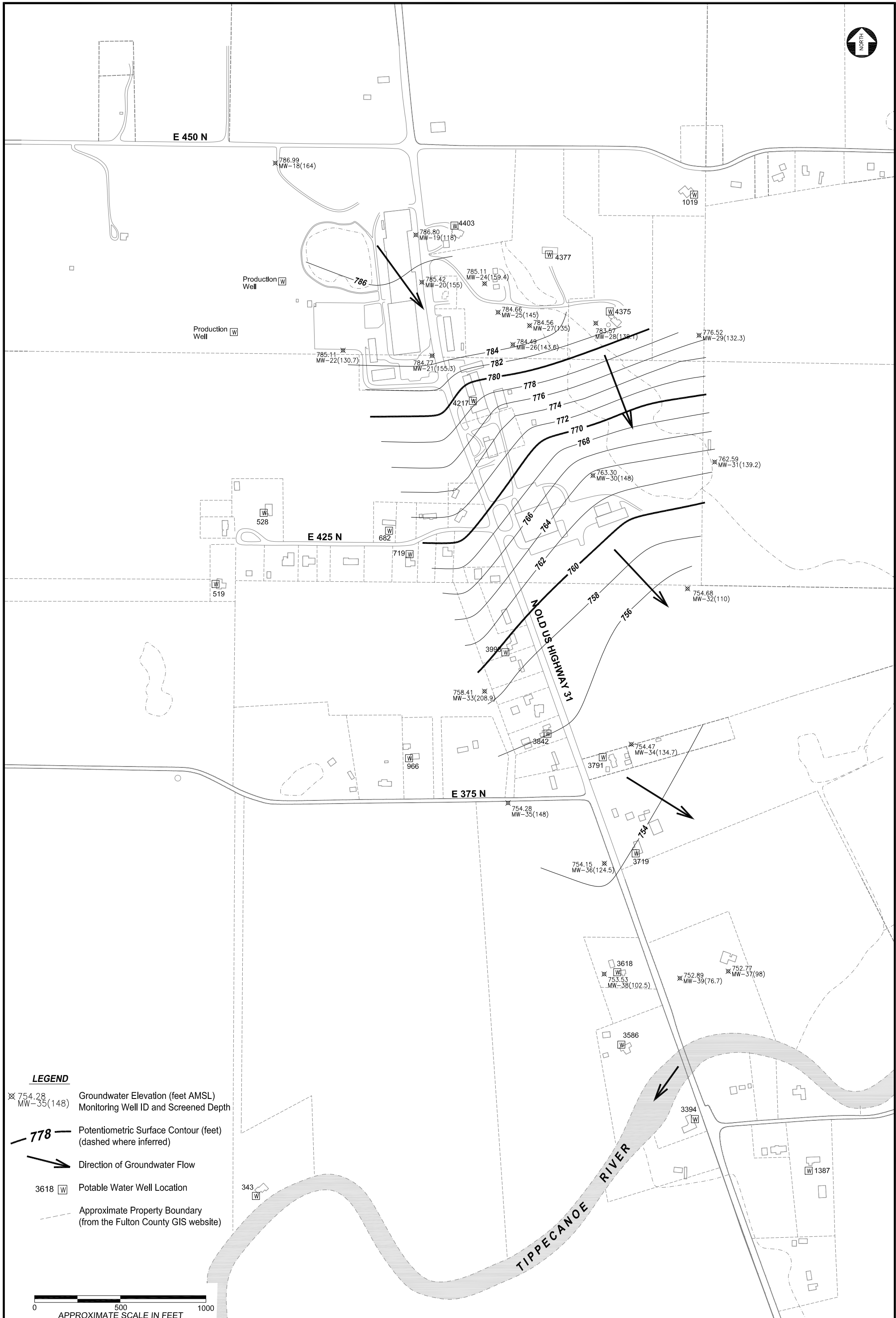
DRAWN BY	P:\Textron\TFS\	FILE NO.
RLB	Drawings\TFS WL Contours.dwg	
APPROVED BY		DATE
		07/28/2009
SOURCE Wells surveyed by Territorial Engineering, 2009; Fulton County, IN GIS, 2005.		
PROJECT NO.	SCALE	
3359 09 2469	SEE ABOVE	

FORMER TORX FACILITY
4366 NORTH OLD US HIGHWAY 31
ROCHESTER, INDIANA



POTENTIOMETRIC
SURFACE CONTOURS
SHALLOW OVERBURDEN
MAY 20, 2009

DRAWING NO.	12
SHEET	1 of 1



LEGEND

- ⊗ 754.28
MW-35(148) Groundwater Elevation (feet AMSL)
Monitoring Well ID and Screened Depth
- 778 — Potentiometric Surface Contour (feet)
(dashed where inferred)
- ➔ Direction of Groundwater Flow
- 3618 [W] Potable Water Well Location
- - - - - Approximate Property Boundary
(from the Fulton County GIS website)



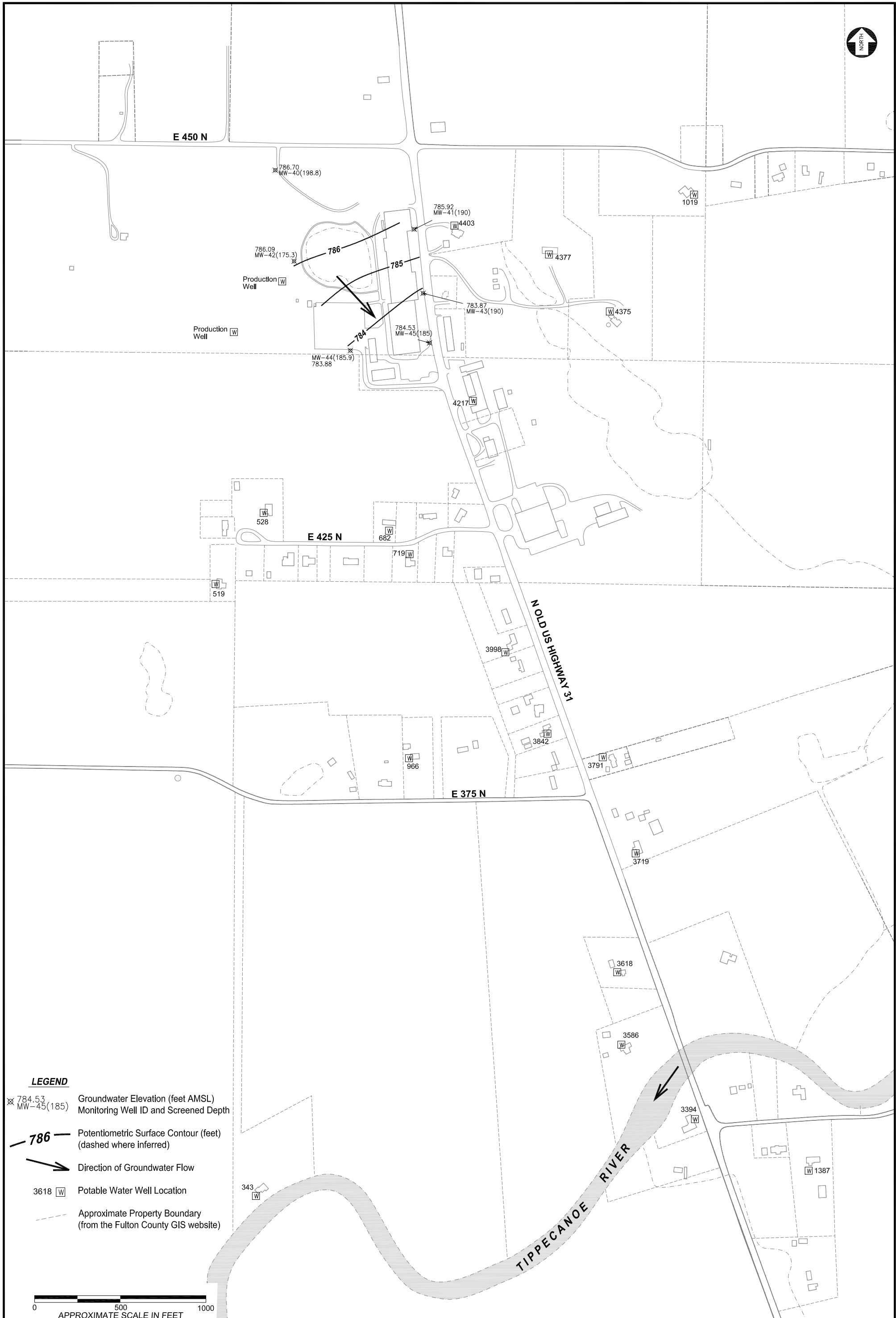
DRAWN BY P:\Textron\TFS\ FILE NO.
 RLB Drawings\TFS WL Contours.dwg
 APPROVED BY DATE
 08/10/2009
 SOURCE Wells surveyed by Territorial Engineering,
 2009; Fulton County, IN GIS, 2005.
 PROJECT NO. SCALE
 3359 09 2469 SEE ABOVE

FORMER TORX FACILITY
4366 NORTH OLD US HIGHWAY 31
ROCHESTER, INDIANA

MACTEC
 521 Byers Road Suite 204
 Miamisburg, Ohio 45342
 (937) 859-3600 FAX (937) 859-7951

POTENTIOMETRIC
SURFACE CONTOURS
DEEP OVERBURDEN
MAY 20, 2009

DRAWING NO.
13
 SHEET 1 of 1



LEGEND

- ⊗ 784.53
MW-45(185) Groundwater Elevation (feet AMSL)
Monitoring Well ID and Screened Depth
- 786 — Potentiometric Surface Contour (feet)
(dashed where inferred)
- ➔ Direction of Groundwater Flow
- 3618 [W] Potable Water Well Location
- - - Approximate Property Boundary
(from the Fulton County GIS website)



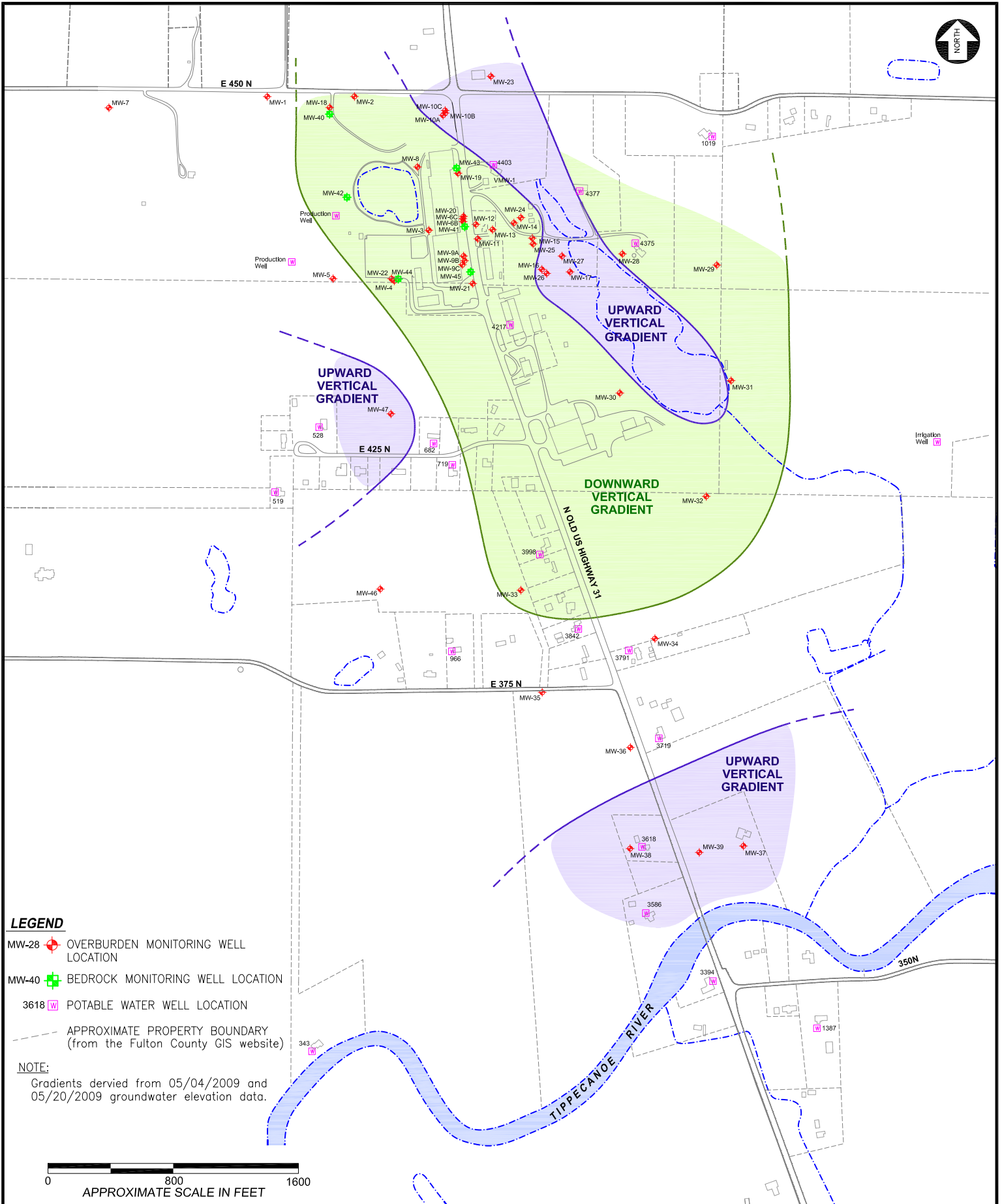
DRAWN BY P:\Textron\TFS\ FILE NO.
 RLB Drawings\TFS WL Contours.dwg
 APPROVED BY DATE
 07/28/2009
 SOURCE Wells surveyed by Territorial Engineering,
 2009; Fulton County, IN GIS, 2005.
 PROJECT NO. SCALE
 3359 09 2469 SEE ABOVE

FORMER TORX FACILITY
4366 NORTH OLD US HIGHWAY 31
ROCHESTER, INDIANA

MACTEC
 521 Byers Road Suite 204
 Miamisburg, Ohio 45342
 (937) 859-3600 FAX (937) 859-7951

POTENTIOMETRIC
SURFACE CONTOURS
BEDROCK
MAY 20, 2009

DRAWING NO.
14
 SHEET 1 of 1



LEGEND

- MW-28 OVERBURDEN MONITORING WELL LOCATION
- MW-40 BEDROCK MONITORING WELL LOCATION
- 3618 POTABLE WATER WELL LOCATION
- APPROXIMATE PROPERTY BOUNDARY (from the Fulton County GIS website)

NOTE:

Gradients derived from 05/04/2009 and 05/20/2009 groundwater elevation data.

0 800 1600
APPROXIMATE SCALE IN FEET

DRAWN BY	P:\Textron\TFS\	FILE NO.
RLB	Drawings\TFS Surveyed Wells.dwg	
APPROVED BY		DATE
		08/10/2009
SOURCE	Wells surveyed by Territorial Engineering, 2009; Fulton County, IN GIS, 2005.	
PROJECT NO.	SCALE	
3359 09 2469	SEE ABOVE	

FORMER TORX FACILITY
4366 NORTH OLD US HIGHWAY 31
ROCHESTER, INDIANA

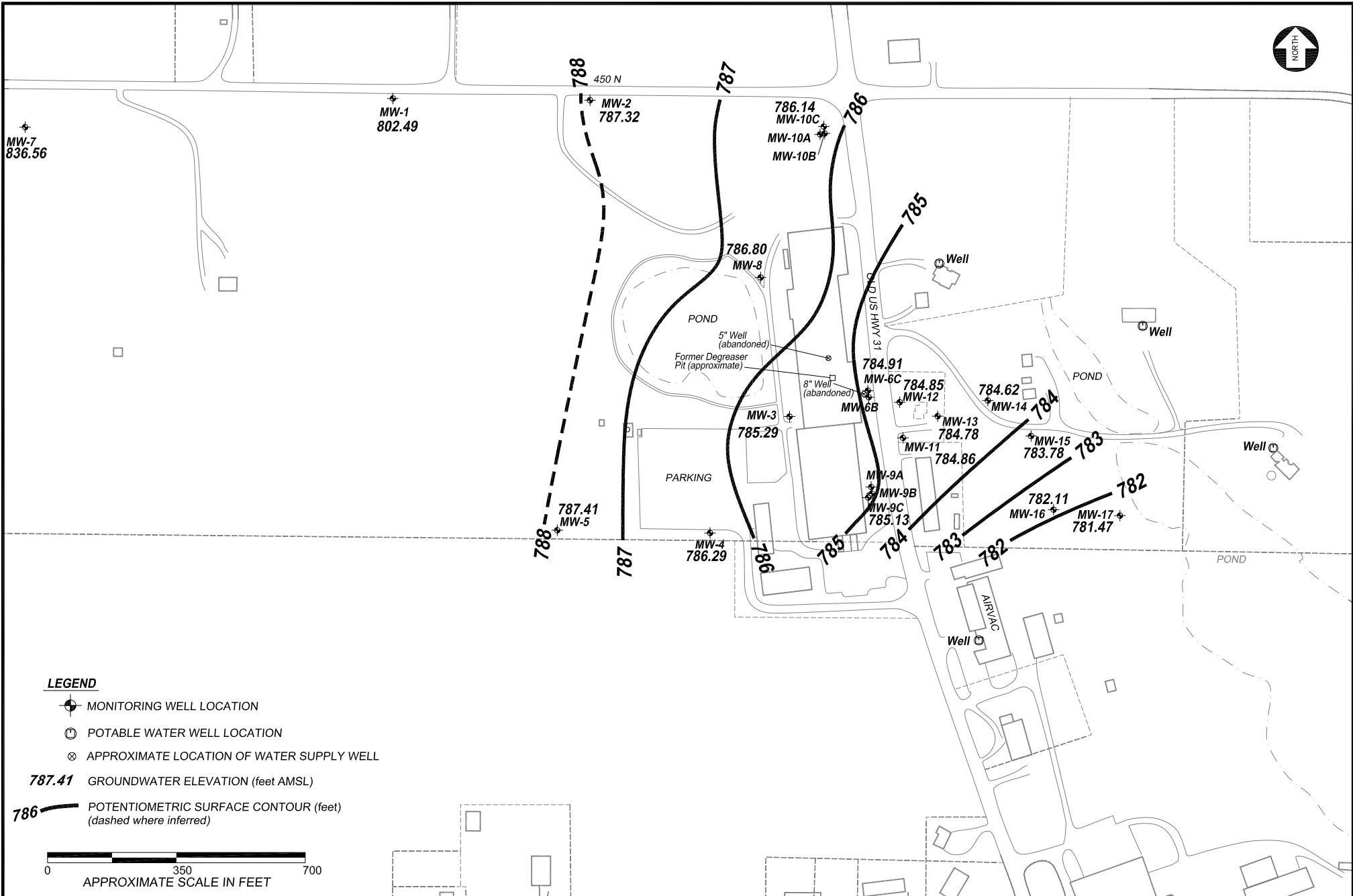
MACTEC
521 Byers Road Suite 204
Miamisburg, Ohio 45342
(937) 859-3600 FAX (937) 859-7951

VERTICAL
GROUNDWATER
GRADIENTS

DRAWING NO.

15

SHEET 1 of 1



LEGEND

- ⊕ MONITORING WELL LOCATION
- ⊙ POTABLE WATER WELL LOCATION
- ⊗ APPROXIMATE LOCATION OF WATER SUPPLY WELL

787.41 GROUNDWATER ELEVATION (feet AMSL)

786 — POTENTIOMETRIC SURFACE CONTOUR (feet)
(dashed where inferred)



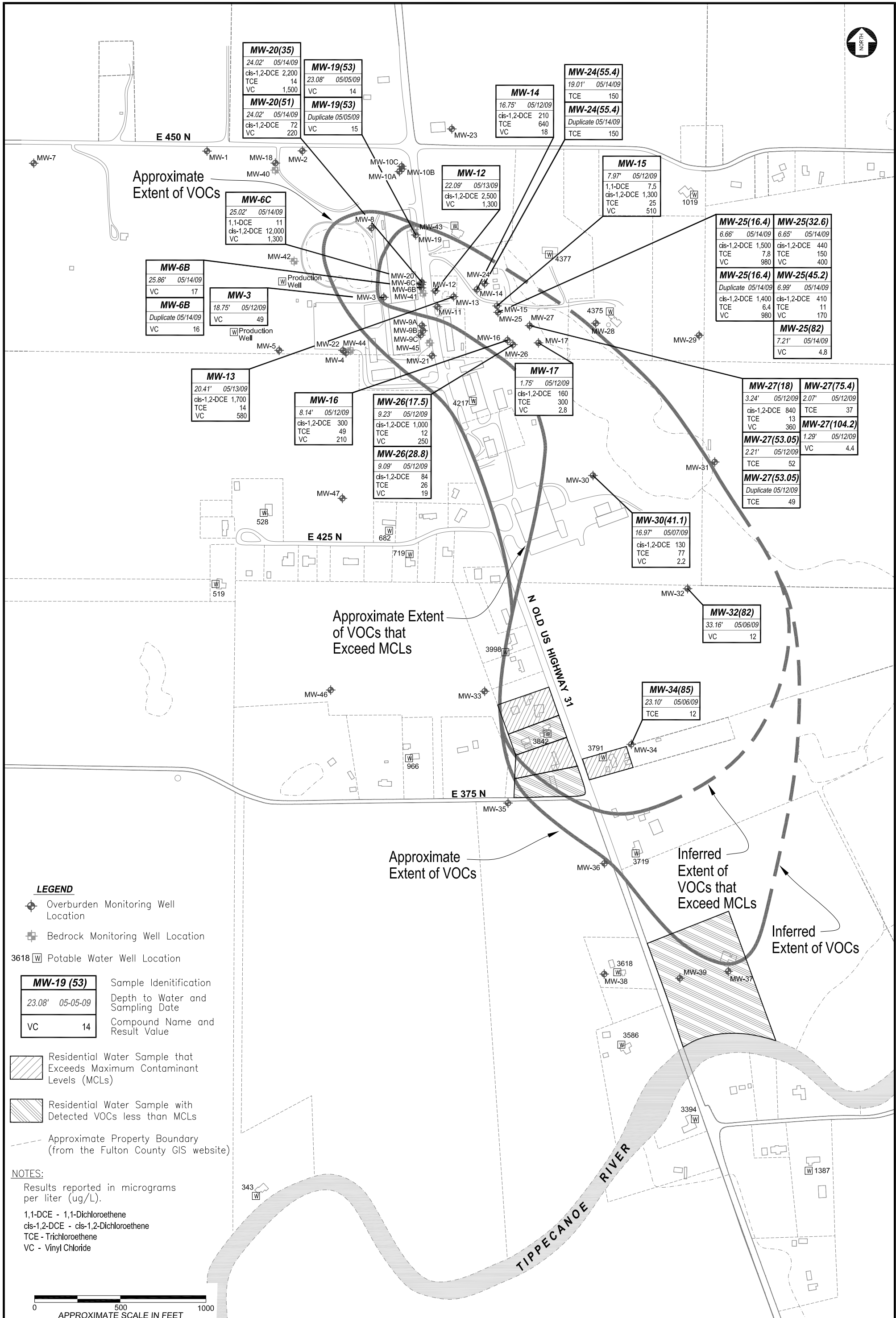
DRAWN BY	P:\Textron\TFS\	FILE NO.
RLB	Drawings\TFS	Surveyed.dwg
APPROVED BY		DATE
		07/23/2009
SOURCE	MACTEC Notes 06/28/05; Fulton County, IN GIS, 2005; Wilcox survey, 2008.	
PROJECT NO.	3359 09 2469	SCALE
		SEE ABOVE

FORMER TORX FACILITY
4366 NORTH OLD US HIGHWAY 31
ROCHESTER, INDIANA

521 Byers Road Suite 204
 Miamisburg, Ohio 45342
 (937) 859-3600 FAX (937) 859-7951

POTENTIOMETRIC SURFACE
DIAGRAM
NOVEMBER 24, 2008

DRAWING NO.	16
SHEET	1 of 1



MW-20(35)
24.02' 05/14/09
cis-1,2-DCE 2,200
TCE 14
VC 1,500

MW-19(53)
23.08' 05/05/09
VC 14

MW-14
16.75' 05/12/09
cis-1,2-DCE 210
TCE 640
VC 18

MW-24(55.4)
19.01' 05/14/09
TCE 150

MW-24(55.4)
Duplicate 05/14/09
TCE 150

MW-6C
25.02' 05/14/09
1,1-DCE 11
cis-1,2-DCE 12,000
VC 1,300

MW-12
22.09' 05/13/09
cis-1,2-DCE 2,500
VC 1,300

MW-15
7.97' 05/12/09
1,1-DCE 7.5
cis-1,2-DCE 1,300
TCE 25
VC 510

MW-25(16.4)
6.66' 05/14/09
cis-1,2-DCE 1,500
TCE 7.8
VC 980

MW-25(32.6)
6.65' 05/14/09
cis-1,2-DCE 440
TCE 150
VC 400

MW-6B
25.86' 05/14/09
VC 17

MW-3
18.75' 05/12/09
VC 49

MW-16
8.14' 05/12/09
cis-1,2-DCE 300
TCE 49
VC 210

MW-26(17.5)
9.23' 05/12/09
cis-1,2-DCE 1,000
TCE 12
VC 250

MW-26(28.8)
9.09' 05/12/09
cis-1,2-DCE 84
TCE 26
VC 19

MW-17
1.75' 05/12/09
cis-1,2-DCE 160
TCE 300
VC 2.8

MW-25(16.4)
Duplicate 05/14/09
cis-1,2-DCE 1,400
TCE 6.4
VC 980

MW-25(45.2)
6.99' 05/14/09
cis-1,2-DCE 410
TCE 11
VC 170

MW-25(82)
7.21' 05/14/09
VC 4.8

MW-27(18)
3.24' 05/12/09
cis-1,2-DCE 840
TCE 13
VC 360

MW-27(75.4)
2.07' 05/12/09
TCE 37

MW-27(53.05)
2.21' 05/12/09
TCE 52

MW-27(104.2)
1.29' 05/12/09
VC 4.4

MW-27(53.05)
Duplicate 05/12/09
TCE 49

MW-30(41.1)
16.97' 05/07/09
cis-1,2-DCE 130
TCE 77
VC 2.2

MW-32(82)
33.16' 05/06/09
VC 12

MW-34(85)
23.10' 05/06/09
TCE 12

LEGEND

- ◆ Overburden Monitoring Well Location
- ⊕ Bedrock Monitoring Well Location
- 3618 □ Potable Water Well Location

MW-19 (53)	Sample Identification
23.08' 05-05-09	Depth to Water and Sampling Date
VC 14	Compound Name and Result Value

Residential Water Sample that Exceeds Maximum Contaminant Levels (MCLs)

Residential Water Sample with Detected VOCs less than MCLs

Approximate Property Boundary (from the Fulton County GIS website)

NOTES:

Results reported in micrograms per liter (ug/L).

1,1-DCE - 1,1-Dichloroethene
 cis-1,2-DCE - cis-1,2-Dichloroethene
 TCE - Trichloroethene
 VC - Vinyl Chloride

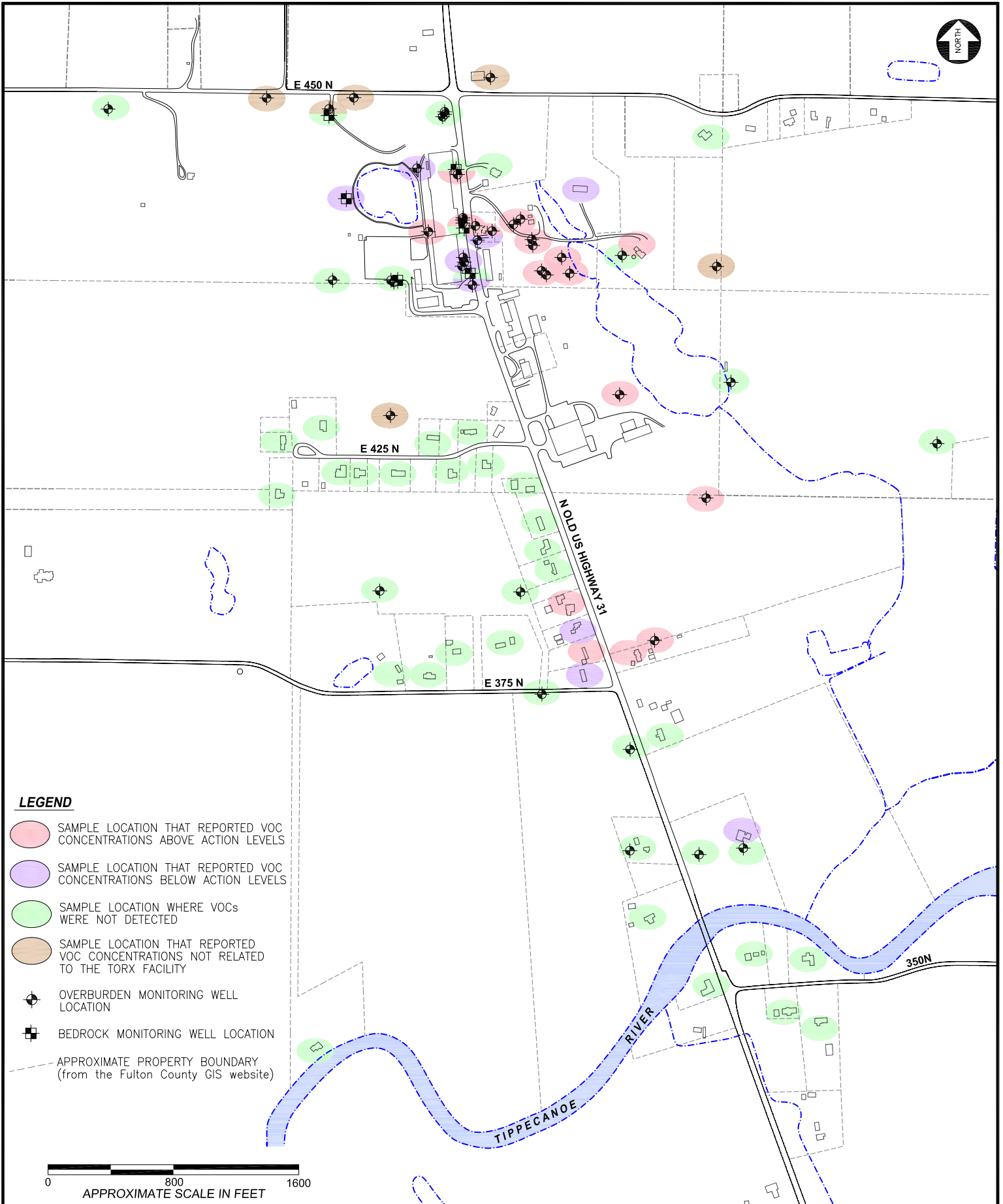


DRAWN BY	P:\Tetron\TFS\	FILE NO.
RLB	Drawings\TFS VOCs MCLs.dwg	
APPROVED BY		DATE
		08/10/2009
SOURCE	Wells surveyed by Territorial Engineering, 2009; Fulton County, IN GIS, 2005.	
PROJECT NO.	SCALE	
3359 09 2469	SEE ABOVE	

FORMER TORX FACILITY
 4366 NORTH OLD US HIGHWAY 31
 ROCHESTER, INDIANA



AREAL EXTENT OF SITE-RELATED VOCs IN GROUNDWATER



LEGEND

- SAMPLE LOCATION THAT REPORTED VOC CONCENTRATIONS ABOVE ACTION LEVELS
- SAMPLE LOCATION THAT REPORTED VOC CONCENTRATIONS BELOW ACTION LEVELS
- SAMPLE LOCATION WHERE VOCs WERE NOT DETECTED
- SAMPLE LOCATION THAT REPORTED VOC CONCENTRATIONS NOT RELATED TO THE TORX FACILITY
- + OVERBURDEN MONITORING WELL LOCATION
- + BEDROCK MONITORING WELL LOCATION
- APPROXIMATE PROPERTY BOUNDARY (from the Fulton County GIS website)

0 800 1600
APPROXIMATE SCALE IN FEET

DRAWN BY	P:\Textron\TFS\
RLB	Drawings\TFS Sampled & Systems.dwg
APPROVED BY	DATE
	08/04/2009
SOURCE	Wells surveyed by Territorial Engineering, 2009; Fulton County, IN GIS, 2005.
PROJECT NO.	SCALE
3359 09 2469	SEE ABOVE

FORMER TORX FACILITY
4366 NORTH OLD US HIGHWAY 31
ROCHESTER, INDIANA

MACTEC
521 Byers Road Suite 204
Miamisburg, Ohio 45342
(937) 859-3600 FAX (937) 859-7951

**RESULTS OF
RESIDENTIAL AND
MONITORING
WELL SAMPLING**

18

SHEET 1 of 1